

Nebraska H2O Stream Bioassessment Workshop | 18-19 May 2011

Central Platte Natural Resources District Board Room | 215 Kaufman Ave, Grand Island NE 68803

Day 1: Wednesday 18 May 2011

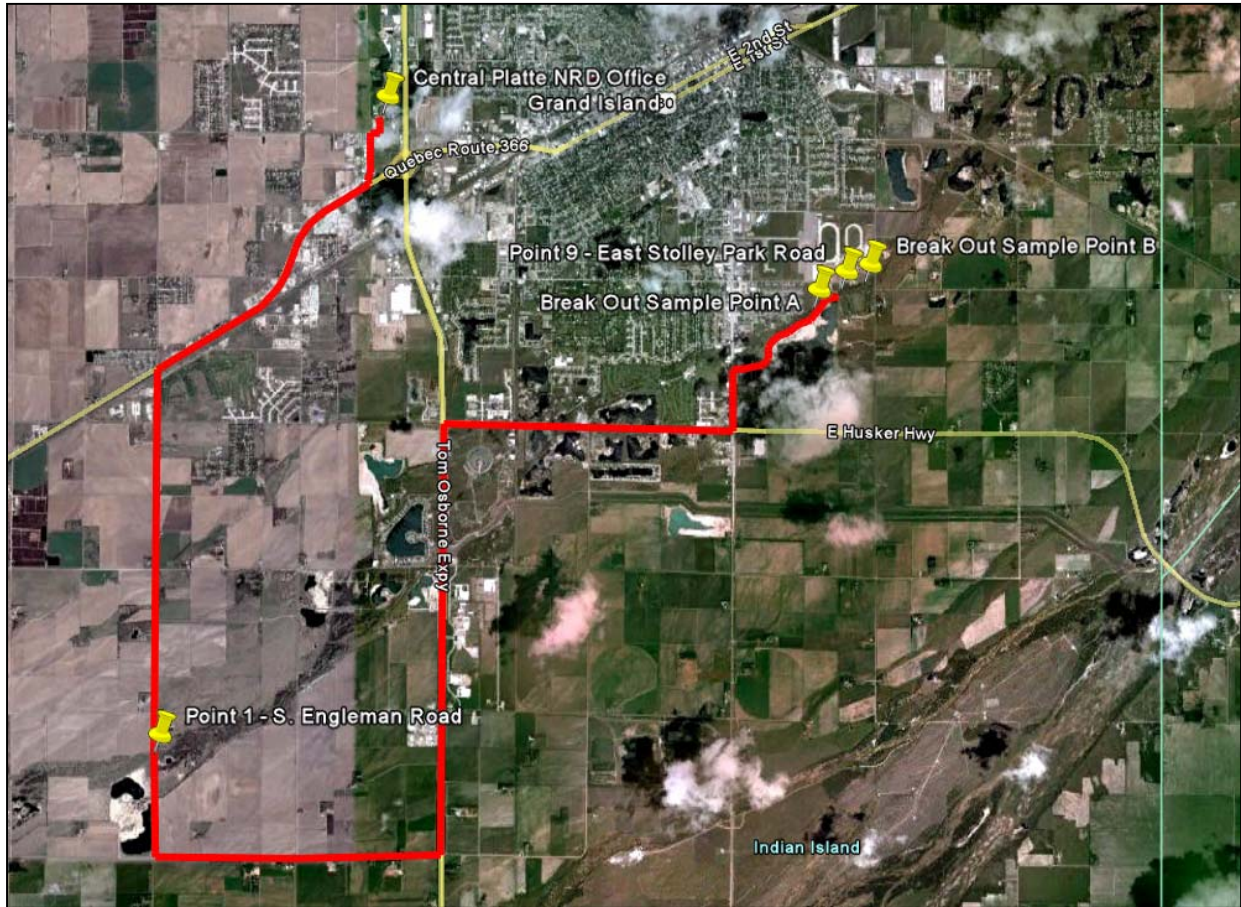
- 8:00 – 8:20 Introductions and Logistics
- Purpose and Intended Outcome of Workshop
 - Central Plains Center for BioAssessment
 - Participants
- 8:20 – 8:45 Why Monitor Streams?
- Clean water act & monitoring to protect uses (UAA)
 - Clear goals or hypothesis – how do you know you're protecting the uses?
 - What can we learn about stressors coming from within the Watershed
 - Base line data, trends over time, or natural deviations?
- 8:45 – 9:45 Bioassessment Overview
- Watershed and Landscape (maps)
 - Fish, Insects, Algae, Plants
 - Ecoregions, Representative Streams, Biologic Integrity
 - Relationship to Water Quality Criteria
- 9:45 – 10:00 *Break*
- 10:00 – 11:00 Basic Methods and Equipment.
- Chemistry, Biology, Physical Habitat
 - Why measure all three?
 - Method variations (State Agencies, EPA, RBP, REMAP, SVAP etc.)
- 11:00-11:45 MS4 Evaluation and Assessment Requirement for Stormwater Management
- 11:45 – 12:30 *Box Lunch Provided*
- 12:30 – 5:00 Interactive Field Demonstrations – See Attached Map
- 6:00 Dinner – Group reservation made at Texas T-Bone Restaurant (1201 South Locust Street)

Day 2: Thursday 19 May 2011

- 8:00 – 8:30 Review, Questions, and Findings from Field and Day 1 Materials
- 8:30 – 9:15 Costs of Conducting Bioassessments
- Laboratory Availability and Needs
 - Use of Volunteers vs. Staff vs. Researchers vs. Consultants
- 9:15 – 10:00 Data Management
- Software and Analytical methods
 - QAQC for representativeness, accuracy, consistency of data.
- 10:00 – 10:15 *Break*
- 10:15 – 11:00 Discussion of MS4 Evaluation and Assessment Plan Template using Bioassessment Approach
- 11:00 – 11:30 Next Steps Discussion & Conclusion



Nebraska H2O Stream Bioassessment Workshop | Field Tour Driving Route



Stop 1 (Point 1) –
Visual Assessment
Wood River
Upstream of Grand
Island at South
Engleman Road



Stop 2 (Point 9) – Field Demonstration and Interactive Exercise Wood River inside Grand Island south of Fonner Park and new State Fair Campus (Access by turning east off Locust Street at Midaro Drive next to All Faiths Funeral Home)

